

TECHNOLOGY REPORT

Marshall Electronics, Inc.

1910 East Maple Av, El Segundo, CA 90245 USA

TEL : 310-333-0606

FAX : 310-333-0688

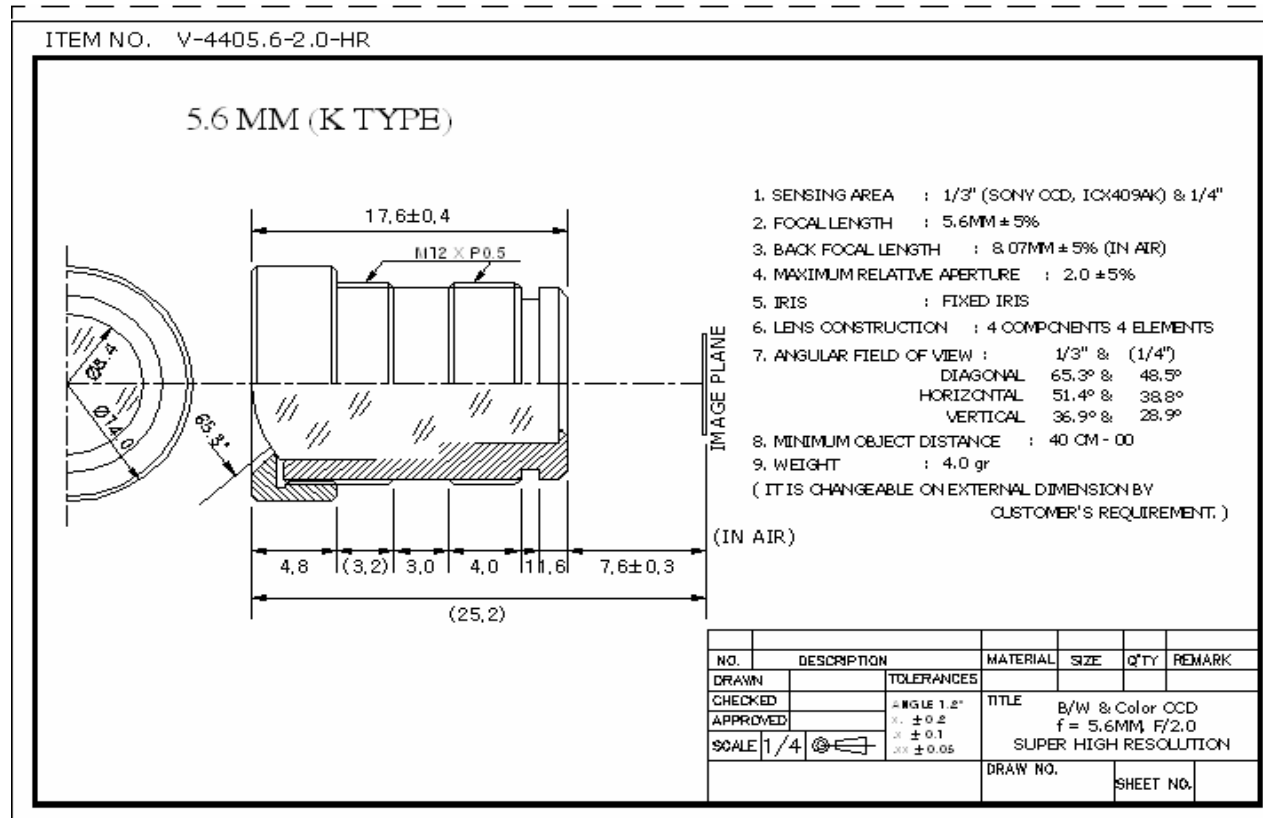
Website: www.mars-cam.com

Email: sales@mars-cam.com

V-4405.6-2.0-HR Lens

5.6mm F2.0 High Resolution CCTV Lens

Specification Data Sheet



TECHNOLOGY REPORT

Marshall Electronics, Inc.

1910 East Maple Av, El Segundo, CA 90245 USA

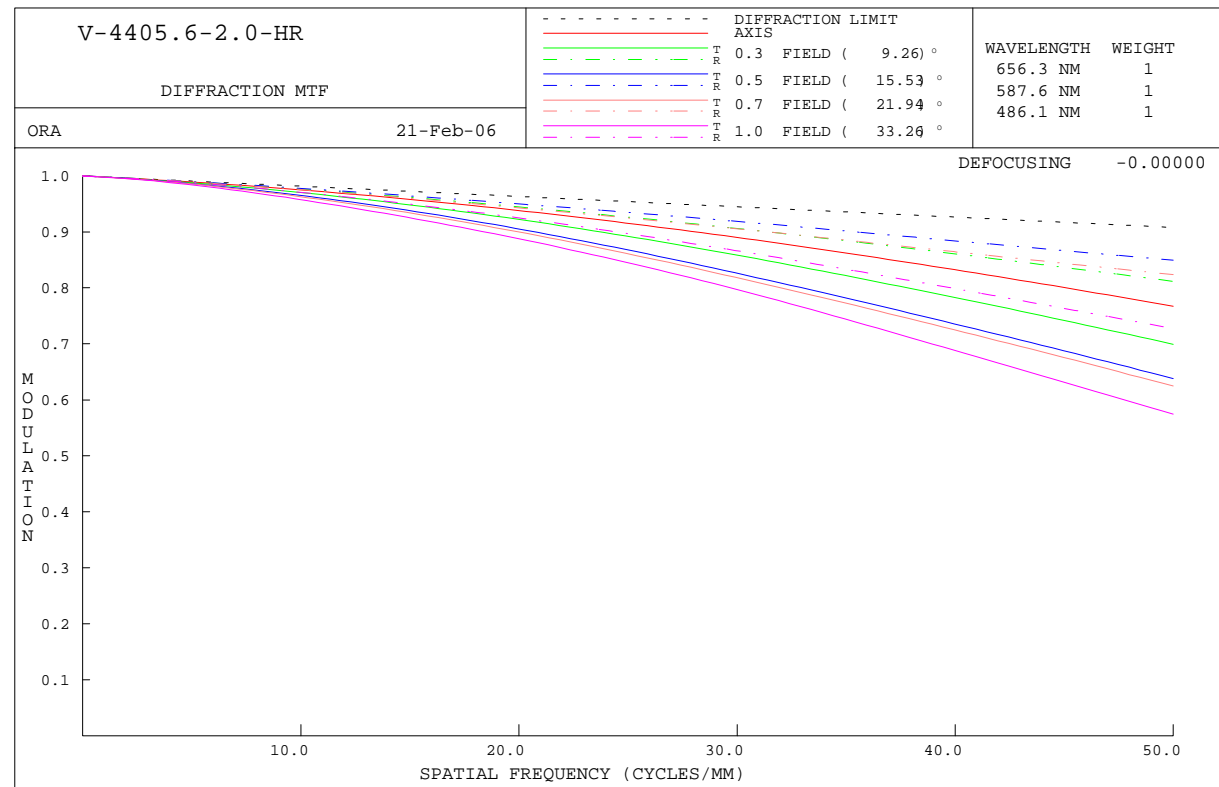
TEL : 310-333-0606

FAX : 310-333-0688

Website: www.mars-cam.com

Email: sales@mars-cam.com

MTF (modulation transfer function)



TECHNOLOGY REPORT

Marshall Electronics, Inc.

1910 East Maple Av, El Segundo, CA 90245 USA

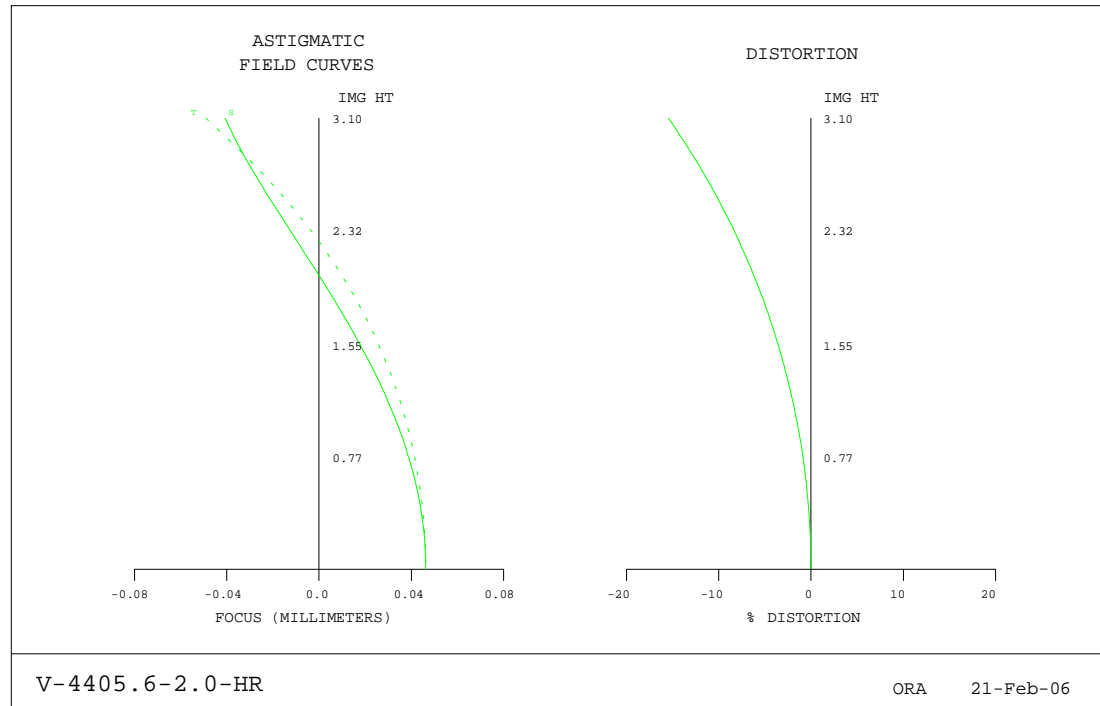
TEL : 310-333-0606

FAX : 310-333-0688

Website: www.mars-cam.com

Email: sales@mars-cam.com

Optical Distortion



TECHNOLOGY REPORT

Marshall Electronics, Inc.

1910 East Maple Av, El Segundo, CA 90245 USA

TEL : 310-333-0606

FAX : 310-333-0688

Website: www.mars-cam.com

Email: sales@mars-cam.com

ROTATIONALLY SYMMETRIC FIELD ABERRATIONS

POSITION 1 V-4405.6-2.0-HR

WAVELENGTH 587.6 NM

| RELATIVE FIELD HEIGHT | IMG HT | X-FOCUS AT THE IMAGE SURFACE | Y-FOCUS | X-FOCUS (DISPLACED BY 0.000000) | Y-FOCUS | DISTORTION (PER CENT) |
|--------------------------|--------|---------------------------------|-----------|------------------------------------|-----------|--------------------------|
| 0.00 | 0.00 | 0.046293 | 0.046293 | 0.046293 | 0.046293 | 0.00000 |
| 0.10 | 0.31 | 0.045073 | 0.045515 | 0.045073 | 0.045515 | -0.14114 |
| 0.20 | 0.62 | 0.041449 | 0.043160 | 0.041449 | 0.043160 | -0.56593 |
| 0.30 | 0.93 | 0.035528 | 0.039159 | 0.035528 | 0.039159 | -1.27851 |
| 0.40 | 1.24 | 0.027496 | 0.033399 | 0.027496 | 0.033399 | -2.28599 |
| 0.50 | 1.55 | 0.017625 | 0.025717 | 0.017625 | 0.025717 | -3.59888 |
| 0.60 | 1.86 | 0.006293 | 0.015907 | 0.006293 | 0.015907 | -5.23164 |
| 0.70 | 2.17 | -0.005998 | 0.003730 | -0.005998 | 0.003730 | -7.20358 |
| 0.80 | 2.48 | -0.018577 | -0.011061 | -0.018577 | -0.011061 | -9.54020 |
| 0.90 | 2.79 | -0.030537 | -0.028652 | -0.030537 | -0.028652 | -12.27517 |
| 1.00 | 3.10 | -0.040630 | -0.049016 | -0.040630 | -0.049016 | -15.45337 |

Units of focus are MILLIMETERS